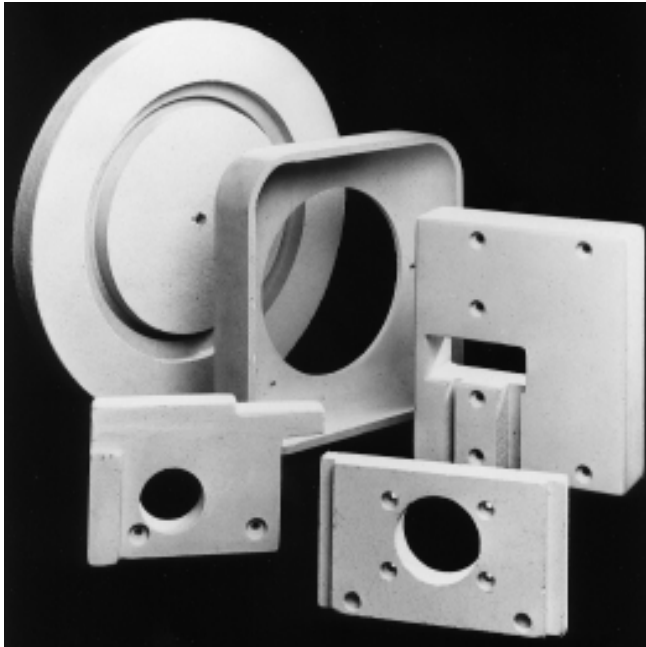


---

## REFRACTORY BOARD TYPES ZIRCAL-18, ZIRCAL-45 AND ZIRCAL-95

---

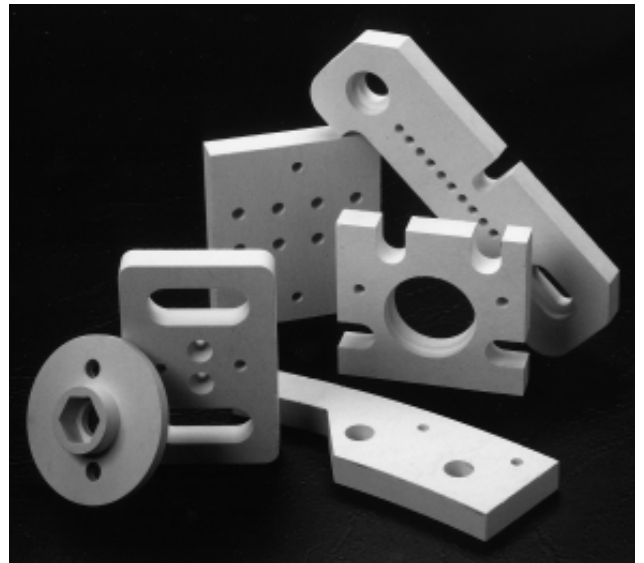
**ZIRCAR Refractory Composites, Inc.** provides a variety of non-asbestos calcium silicate structural insulations that combine high strength and excellent thermal insulating characteristics for use in a variety of heat processing, fire protection and electrical resistance applications. The unique calcium silicate structure provides excellent thermal shock resistance as evidenced in its typical use as a direct contact board for non-ferrous metals and in fire training burn rooms. They are fire resistant to temperatures approaching 2000°F. They also exhibit low thermal conductivities that remain relatively constant over a broad range of operating temperatures.



*ZIRCAL-95 is ideal for machining to tight tolerances.*

Uses include insulation for Annealing furnaces, Blast furnace stoves, Bustle pipes, Car tops, Forge furnaces, Glass lehrs, Heat treating, Hi-temp mains and flues, Industrial boilers, Kiln cars, Kilns, Laboratory furnaces, Marine boilers, Ovens, Pot furnaces, Petrochem heaters, Pipe supports, Regenerators, Reheat furnaces, Reverberatory furnaces, Roasters, Soaking pits, and Utility boilers.

- Thermal shock resistance and stability - will withstand continuous heat up to its full temperature limit.
- A consistently low thermal conductivity means high energy savings.
- High structural strength at elevated temperatures - retains full integrity across a broad range of temperatures.
- Incombustible - ideal for personnel protection, cable trays, fire doors, and marine applications.
- Easily machined to tight tolerances with conventional tooling.



*ZIRCAL-45 boards are used in a variety of heat insulating process, fire protection and as machined parts.*

---

### **ZIRCAR Refractory Composites, Inc.**

P.O. BOX 489, FLORIDA, NY 10921-0489  
Tele: (845) 651-2200, Fax: (845) 651-1515  
e-mail: [sales@zrci.com](mailto:sales@zrci.com)  
Home page: <http://www.zrci.com>

**Technical Data**  
Bulletin No. ZRCI-301  
July 2005

---

# REFRACTORY BOARD TYPES

## ZIRCAL-18, ZIRCAL-45 AND ZIRCAL-95

---

### ZIRCAL-18

**Type ZIRCAL-18** Refractory Board is a high temperature calcium silicate block insulation with excellent mechanical properties and stability up to **1100°C(2000°F)**. Its high thermal insulating value makes it ideal for many fireproofing and heat processing equipment applications. ZIRCAL-18 is designed to serve as a backup insulation for any refractory construction, such as insulating fire brick, dense refractory brick, castable, gunning mix, plastic refractory or ceramic fiber.

ZIRCAL-18's high refractoriness and strength help prevent catastrophic failure of the refractory system. Often the hot face refractory can crack in service allowing the backup insulation to be exposed to elevated temperatures. ZIRCAL-18 makes continued use of the operation possible, allowing for orderly shutdown and maintenance.

In the aluminum industry, ZIRCAL-18 is ideally suited as an electrolytic cell insulation. Its combination of strength, thermal conductivity, stability and handleability makes it ideal for reduction cell applications.

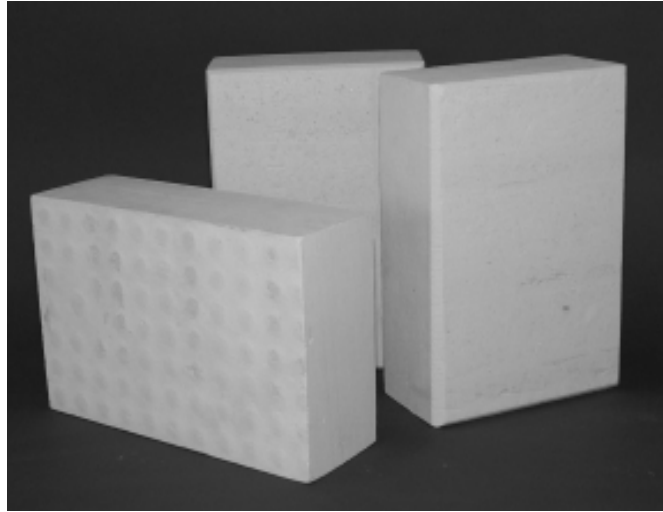
In the petrochemical industry, ZIRCAL-18 is ideally suited as a backup insulation in heaters and furnaces, and in applications requiring high strength such as insulated pipe

### ZIRCAL-95

**Type ZIRCAL-95** Refractory Board is produced from a combination of natural organic fibers and inert reinforcing fillers in a high density calcium silicate hydrate matrix. Designed as a substitute for asbestos cement boards, ZIRCAL-95 is useful as structural and electrical insulation in applications with temperatures to **1000°C(1832°F)**.

ZIRCAL-95's surface is sanded smooth. It has a uniform consistency making it a useful source for custom machined insulating parts.

ZIRCAL-95 combines low thermal conductivity and good dielectric properties with high mechanical strength. It is hygroscopic and contains a small amount of moisture. For certain high temperature electrical insulation applications, ZIRCAL-95 should be thoroughly dried for 24 hours at 100°C-150°C. It is ideal for use as press platen insulation, foundry core and blow plates, induction furnace casing, electrical resistance insulation, hot glass handling, as well as many others.



*ZIRCAL-18 is the ideal choice for efficient insulation of kilns, furnaces, ovens, stoves, boilers, soaking pits, regenerators, mains and other combustion equipment.*

### ZIRCAL-45

**Type ZIRCAL-45** Refractory Board is a self supporting, high strength, rigid refractory product fabricated from calcium silicate, inert fillers and reinforcing agents. Its high structural strength combined with high thermal insulating value make it ideal for many fireproofing and heat processing equipment applications up to **650°C(1202°F)**. ZIRCAL-45 is highly damage resistant, non-corroding, and extremely water-resistant.

ZIRCAL-45 in full size 4' x 8' panels offers major economic advantages in the construction of ovens, dryers, and other insulated housings for the retention and control of heat. ZIRCAL-45 can be readily fabricated into various sizes and shapes for heat baffles and all types of insulating parts.

It is used in fire safety applications such as fire stops, fire walls, cable trays and fire doors, and provides an ideal, incombustible base for melamine veneers. ZIRCAL-45 panels have flame spread and smoke developed ratings of 0 & 0, and are not damaged by inflammable charges that are subject to occasional flaming.

ZIRCAL-45 is not affected by moisture or high humidity, and will not rust or corrode. The panels will not disintegrate even after prolonged immersion in water. While panels can be painted if desired, preservative treatments are not required for interior applications. ZIRCAL-45 is hygroscopic and electrical resistance is reduced when it absorbs moisture. For electrical applications, ZIRCAL-45 components should be thoroughly dried or moisture proofed before use.



### ZIRCAR Refractory Composites, Inc.

P.O. BOX 489, FLORIDA, NY 10921-0489  
Tele: (845) 651-2200, Fax: (845) 651-1515  
e-mail: sales@zrci.com  
Home page: <http://www.zrci.com>

# REFRACTORY BOARD TYPES

## ZIRCAL-18, ZIRCAL-45 AND ZIRCAL-95

TYPE	ZIRCAL-18	ZIRCAL-45	ZIRCAL-95
Nominal composition, wt%			
CaSiO <sub>3</sub>	93	95	96
Other oxides	1.5	<5	<4
Moisture	-	3	1
Loss on ignition	5.5	-	-
Density, g/cc (pcf)	0.28(17.5)	0.76(46)	1.4(85)
Maximum use temp.*, °C(°F)	1100(2012)	650(1202)	1000(1832)
MOR**, MPa(psi)			
MOR @ room temp.	1.1(160)	5.6(800)	18(2600)
Compressive strength**, MPa(psi)			
5% deformation	1.4(203)	70(1000)	450(6400)
Linear reheat shrinkage, %‡			
12 hrs. at 650°C(1202°F)	0.0	0.4	0.13
12 hrs. at 1050°C(1922°F)	1.0	-	0.5
Thermal Conductivity**, W/mK(BTU/hr ft <sup>2</sup> °F/in.)			
200°C(392°F)	0.07(0.49)	0.12(0.81)	0.31(2.13)
400°C(752°F)	0.09(0.62)	0.12(0.81)	0.27(1.80)
600°C(1112°F)	0.10(0.69)	0.12(0.81)	0.29(2.01)
Coefficient of thermal expansion, K <sup>-1</sup> (°F <sup>-1</sup> )	5.5 x 10 <sup>-6</sup>	5.5 x 10 <sup>-6</sup>	5.5 x 10 <sup>-6</sup>
20°C - 700°C(68°F - 1292°F)	(3.1 x 10 <sup>-6</sup> )	(3.1 x 10 <sup>-6</sup> )	(3.1 x 10 <sup>-6</sup> )
Volume Resistivity, ohm-cm			
ASTM D-257	-	9.8 x 10 <sup>7</sup>	4.52 x 10 <sup>12</sup>
Arc Resistance, sec.			
ASTM D-495	-	-	314
Dielectric Strength, volts/mil			
ASTM D-495	-	45	61
Screw holding strength			
@ 7/8" penetration, kg(lbs)	-	91(200)	397(875)

\* Maximum use temperature is dependent on variables such as stresses, both thermal and mechanical, and the chemical environment that the material experiences.

\*\* Properties expressed parallel to thickness.

‡ Properties expressed perpendicular to thickness.



**ZIRCAR Refractory Composites, Inc.**

P.O. BOX 489, FLORIDA, NY 10921-0489

Tele: (845) 651-2200, Fax: (845) 651-1515

e-mail: sales@zrci.com

Home page: <http://www.zrci.com>

---

# REFRACTORY BOARD TYPES

## ZIRCAL-18, ZIRCAL-45 AND ZIRCAL-95

---

### ZIRCAL-18

ITEM #	STANDARD SIZE
SS60	24" X 36" X 1"
SS61	24" X 36" X 1.5"
SS62	24" X 36" X 2"
SS63	24" X 36" X 2.5"
SS64	24" X 36" X 3"
SS65	24" X 36" X 3.5"
SS66	24" X 36" X 4"
SS70	48" X 36" X 1"
SS71	48" X 36" X 1.5"
SS71	48" X 36" X 2"
SS73	48" X 36" X 2.5"
SS74	48" X 36" X 3"
SS75	48" X 36" X 3.5"
SS76	48" X 36" X 4"

### ZIRCAL-45

ITEM #	STANDARD SIZE
SS30	48" X 96" X 1/2"
SS31	48" X 96" X 3/4"
SS32	48" X 96" X 1"
SS33	48" X 96" X 1 1/4"
SS34	48" X 96" X 1 1/2"
SS35	48" X 96" X 2"
SS40	48" X 48" X 1/2"
SS41	48" X 48" X 3/4"
SS42	48" X 48" X 1"
SS43	48" X 48" X 1 1/4"
SS44	48" X 48" X 1 1/2"
SS45	48" X 48" X 2"
SS50	24" X 48" X 1/2"
SS51	24" X 48" X 3/4"
SS52	24" X 48" X 1"
SS53	24" X 48" X 1 1/4"
SS54	24" X 48" X 1 1/2"
SS55	24" X 48" X 2"

### ZIRCAL-95

ITEM #	STANDARD SIZE
SS01	48" X 96" X 1/4"
SS02	48" X 96" X 1/2"
SS03	48" X 96" X 3/4"
SS04	48" X 96" X 1"
SS05	48" X 96" X 1 1/4"
SS06	48" X 96" X 1 1/2"
SS07	48" X 96" X 2"
SS08	48" X 96" X 3"
SS10	48" X 48" X 1/4"
SS11	48" X 48" X 1/2"
SS12	48" X 48" X 3/4"
SS13	48" X 48" X 1"
SS14	48" X 48" X 1 1/4"
SS15	48" X 48" X 1 1/2"
SS16	48" X 48" X 2"
SS17	48" X 48" X 3"
SS20	24" X 48" X 1/4"
SS21	24" X 48" X 1/2"
SS22	24" X 48" X 3/4"
SS23	24" X 48" X 1"
SS24	24" X 48" X 1 1/4"
SS25	24" X 48" X 1 1/2"
SS26	24" X 48" X 2"
SS27	24" X 48" X 3"

Custom boards, shapes and assemblies are available on request. Our forming processes, large inventory of custom tooling and state of the art machining techniques allow a wide variety of sizes and shapes to be made. Special geometries such as disks, rings and custom-machined shapes and others can be fabricated. Tight tolerance machining, compositional variations and the application of surface rigidizers and hardening agents are available. Please contact us with your special requirements.

## FABRICATION INFORMATION

ZIRCAL-95 has unique machining characteristics. It is easily cut with hand held woodworking tools using "slow" cutting action. Operator will notice the rate of material removal decreases as increased force and tool speed is applied. When sawing by hand, a slow steady motion works best. ZIRCAL-95 has been successfully machined using power equipment with the following parameters:

- Sawing: Diamond wheel, approximately 250 mm diameter with 12 mm long teeth spaced 25 mm apart, 1800 RPM.
- Milling: Double edge carbide end mill, speed approximately 4000 RPM, feed rate - 4 m/min.
- Turning: Carbide tipped tools used on 50 mm diameter part at 1200 RPM, feed rate - 4 m/min.



**ZIRCAR Refractory Composites, Inc.**  
P.O. BOX 489, FLORIDA, NY 10921-0489  
Tele: (845) 651-2200, Fax: (845) 651-1515  
e-mail: sales@zrci.com  
Home page: <http://www.zrci.com>